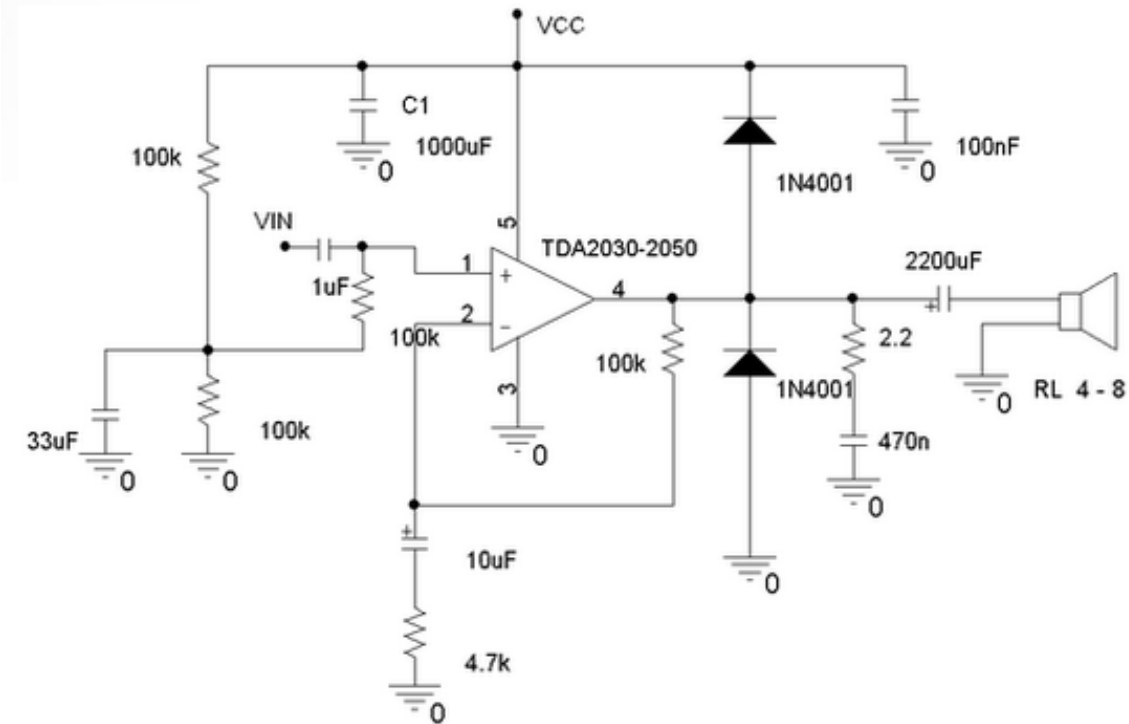


# TDA2030-2040-2050

Stessa piedinatura, circuito identico, ma il 2050 ha una potenza sviluppabile superiore rispetto al 2040, a sua volta superiore rispetto al 2030. Amplificatore ideale per strumenti musicali come pianole e chitarre.

## TDA2030-TDA2040-2050



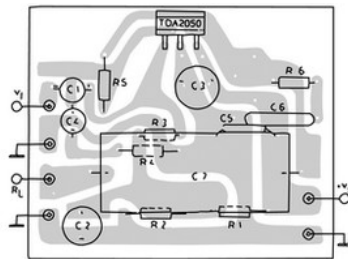
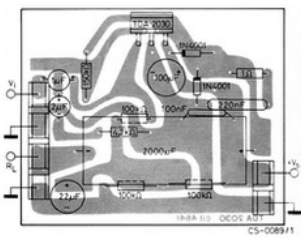
L'incremento di potenza è in parte dato dalla possibilità di alimentare il TDA2050 a tensioni più elevate.

### Alimentazione massima

TDA2030:36V    +++    TDA2040: 40V    +++    TDA2030AV: 44V    +++    TDA2050: 50V

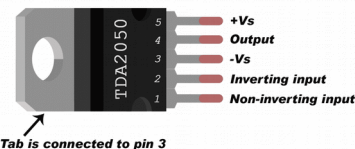
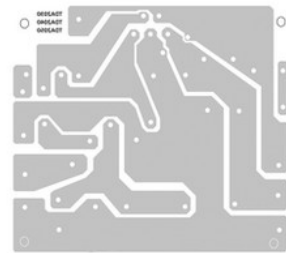
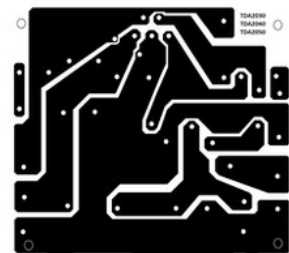
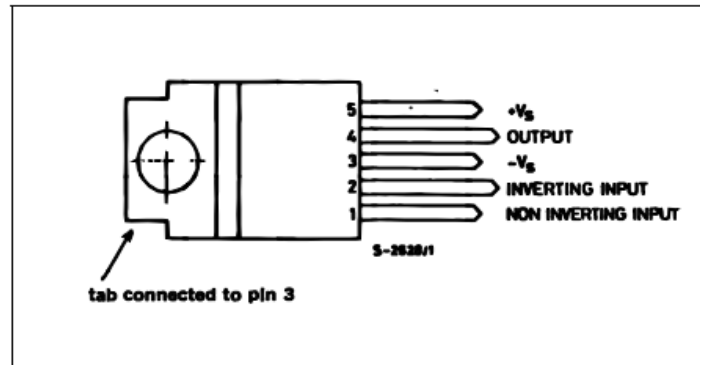
### Potenza RMS con carico 4 ohm (distorione 0,5%):

TDA2030(32v): 18W    +++    TDA2040(36v): 28W    +++    TDA2030AV(36v): 22W    +++    TDA2050(44v): 40W



### TDA2030

#### PIN CONNECTION (Top view)



PCB per i vari amplificatori della serie,